

CCB5075**Compact Classic Bookshelf loudspeaker**

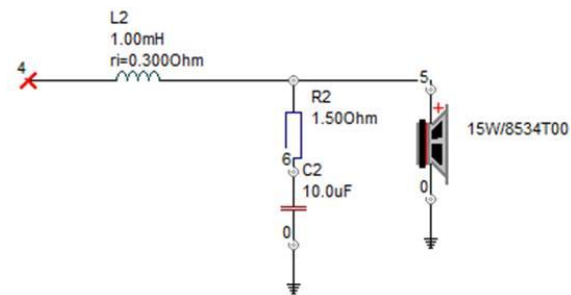
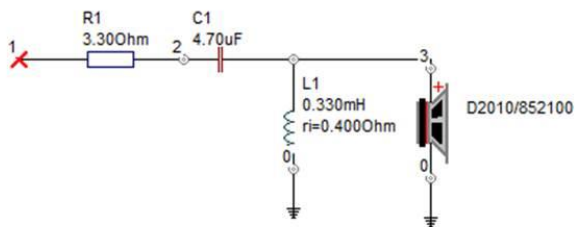
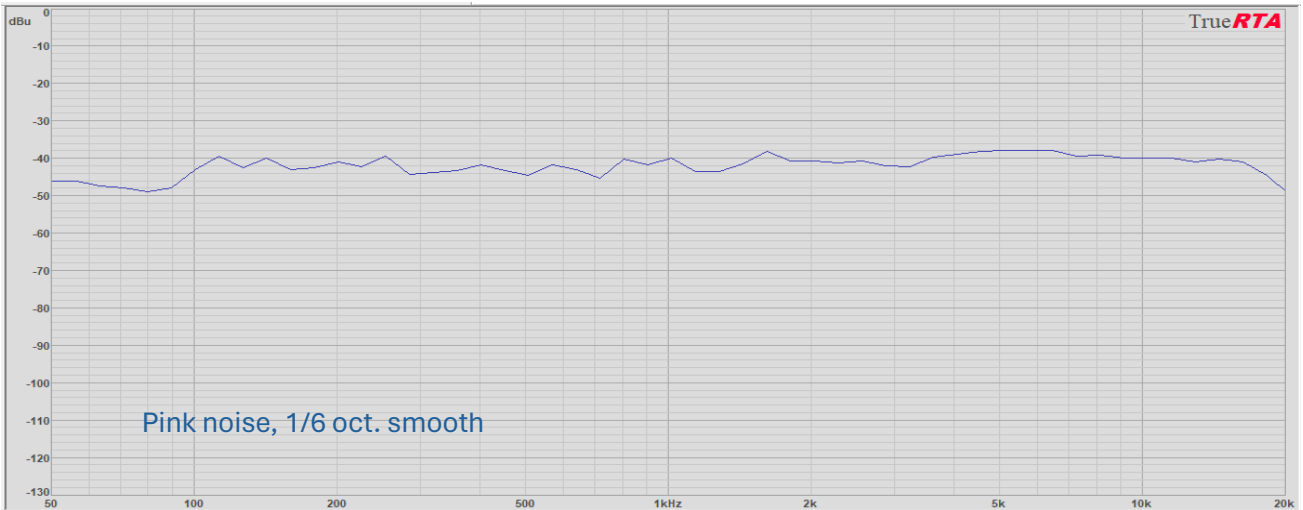
Small speaker with big sound, this tiny speaker measures only 15 x 22 x 27cm (W x D x H) and has an internal volume of approximately 5½ liter, but sound like it was much larger. It features a 20mm Dome tweeter D2010/852100 and a 15cm midwoofer 15W/8534T00, both from our Classic family.

**Tweeter – D2010/852100****Key features:**

- ✓ 20mm Textile Dome Diaphragm
- ✓ Wide Dispersion
- ✓ Diffraction Damping Cell Rubber Front
- ✓ Dual Rear Chamber
- ✓ Vented Pole Piece

Midwoofer - 15W/8534T00**Key features:**

- ✓ Phenomax Cone
- ✓ Patented Symmetrical Drive Motor Design
- ✓ 38mm Voice Coil w. Titanium foil
- ✓ Low loss linear suspension
- ✓ Aluminium chassis



Parts list:

Drivers:

Scan-Speak D2010/852100
Scan-Speak 15W/8534T00

Port tube: $\varnothing 45 \times 145 \text{mm}$

X-Over Parts list:

| | |
|----|-------------------------------------|
| C1 | 4.7 μF 400 V |
| C2 | 10 μF / 100 V |
| L1 | 0.33 mH / ri 0.39 Ω Air Coil |
| L2 | 1.0 mH / ri 0.3 Ω Air Coil |
| R1 | 3.3 Ω / 10 W |
| R2 | 1.5 Ω / 10 W |

